



## Acceptable file formats & how to convert a video file

If you are recording a video to upload to a Panopto Assignment folder, Panopto will accept most common video formats including AVI, MP4, MPG, WMV, MOV, QT, ASF, 3GP, WMA, MP3 and M4V but **there are some video formats that it won't accept including MPV files.**

If you are using a Mac or other iOS device and recordings are set to output MPV files, you may be able to change the settings or export your video as an M4V file. If you're unable to do that you will need to convert your video to a M4V file so that you can upload it to Panopto

### Handbrake



Handbrake is a free application that can be used to convert most video formats including MPV files.

### How to download and install Handbrake

There is information and a link to download Handbrake on the Marjon TELKit which can be accessed as follows:

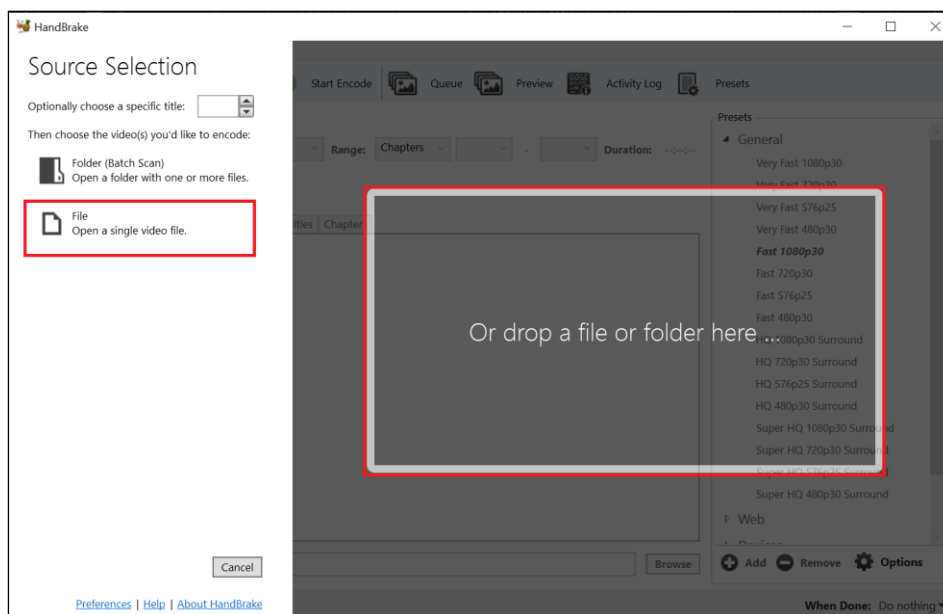
1. Go to [MyMarjon](#)
2. Scroll down and click [Student QuickLinks](#)
3. Click Marjon [TELKit](#)
4. Select [Handbrake](#)

The page contains brief information about Handbrake, a video tutorial, a guide and a download link

5. Click the 'download Handbrake' link
6. Then go to you downloads folder, locate Handbrake and double click to launch
7. Follow onscreen instructions to install Handbrake

### How to convert video file to M4V format in Handbrake

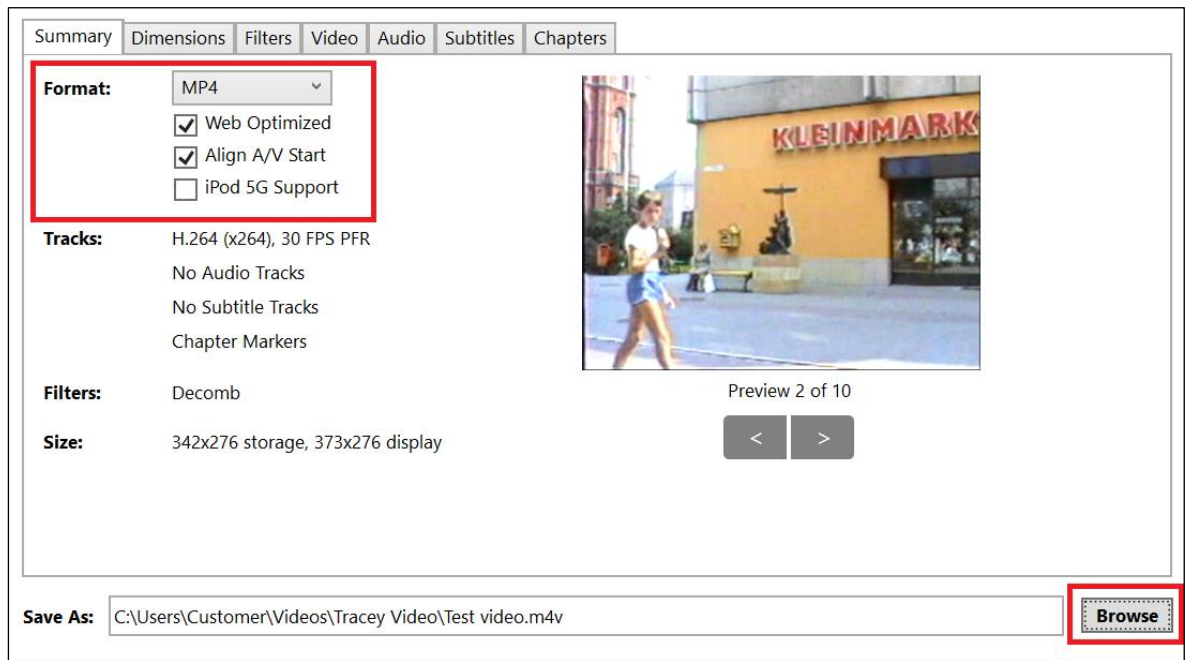
1. Open Handbrake
2. Click 'Open a single video file' or drag and drop your video file in the area indicated



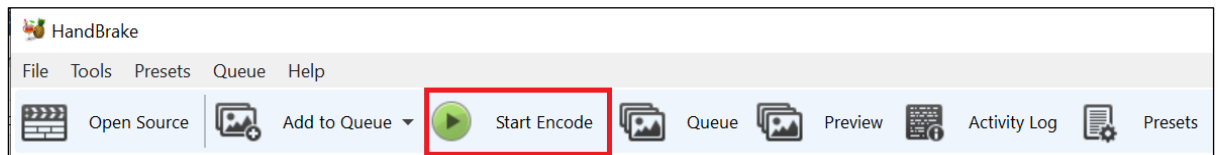


## Acceptable file formats & how to convert a video file

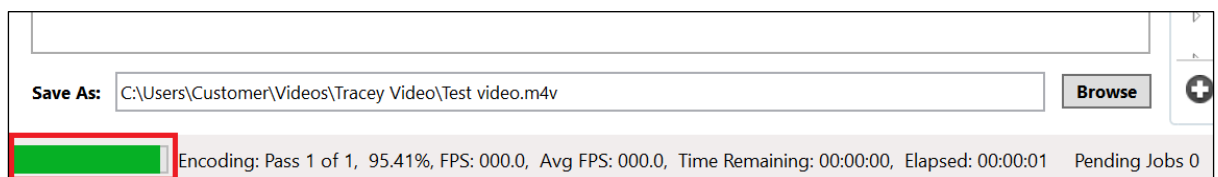
3. Select MP4 as the output format and check 'web optimised' and 'align A/V Start' checkboxes
4. Click browse and navigate to the location you want to save the file to, then enter a name for converted video



5. Click the 'Start Encode' button



6. A green bar will display to indicate progress as the video is encoded



7. When the encoding has finished you will see a 'Queue Finished' status and will then be able to access the video from the folder you saved it to

