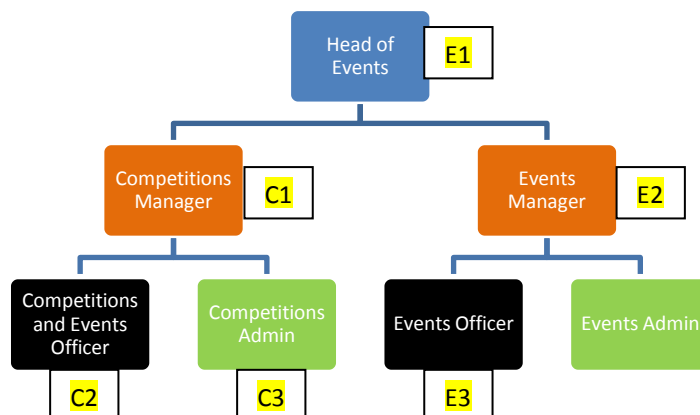


Appendix 1

Events and Competitions



ENGLAND
HOCKEY



England Hockey Events and Competitions

| Event/competition | Lead | Event/competition | Lead |
|---|------|-------------------------------|------|
| Major Events | | Junior School | |
| International World/Euro Level events | E1 | Girls U13 Mini | C3 |
| Investec London Cup | E2 | Girls U14 Cup | C3 |
| One-off Internationals | E2 | Girls U16 Cup | C2 |
| Sainsbury UK School Games | E3 | Girls U18 Cup | C2 |
| Futures Cup | E3 | Boys U13 Mini | C3 |
| EuroHockey League Round 1 (when applicable) | E2 | Boys U14 Cup | C3 |
| | | Boys U16 Cup | C2 |
| Adult League | | Boys U18 Cup | C2 |
| Adult EHL | C1 | Indoor Junior | C2 |
| NOW:Pensions Men's Hockey League | C1 | | |
| Investec Women's Hockey League | C1 | Junior Club | |
| NPMHL & IWHL Playoffs & Finals | E2 | Girls U12 Mini | C3 |
| Hockey Fives Championship | C1 | Girls U14 Cup | C3 |
| Hockey Fives Women's Semi-Finals | E2 | Girls U16 Cup | C2 |
| Hockey Fives Finals | E2 | Girls U18 Cup | C2 |
| | | Girls U12 Mini | C3 |
| Adult Knock Out | | Boys U14 Cup | C3 |
| Men's Cup | C1 | | |
| Men's Trophy | C1 | Boys U16 Cup | C2 |
| Men's Vase | C1 | Boys U18 Cup | C2 |
| Men's 2nd XI Cup | C2 | Indoor Junior | C2 |
| Men's 2nd XI Trophy | C2 | | |
| Men's Knock-Out Finals Weekend | E3 | Other Events | |
| Women's Cup | C1 | Awards Event | E3 |
| Women's Trophy | C1 | Gala Dinners | E3 |
| Women's Vase | C1 | Golf Day | E3 |
| Women's 2nd XI Cup | C2 | Experiential Event - Various | E3 |
| Women's 2nd XI Trophy | C2 | Coach Engagement Sessions etc | E3 |
| Women's Knock-Out Finals Weekend | E3 | Club Open Weekend | E3 |
| Mixed Trophy | C2 | | |
| Men's Master's Over 40's | C2 | | |
| Men's Master's Over 50's | C2 | | |
| Women's Master's Over 35's | C2 | | |
| Men's County Cup | C2 | | |